



SHAPING OUR SHAPING OUR *Future*
THROUGH UNITY & INNOVATION
THROUGH UNITY & INNOVATION

www.rmis.co.za



Industry Championed Traceability Solution

PRINCIPALS

Must be achieved to ensure/enhance UPTAKE

TRUST

Trust is the basis of participation

Farmers and other value chain clients already have trust in their recordkeeping service provider

OPTIONS

Provision of options based on preference and utility

Provide participants with service provider and tagging options

DATA UTILITY

Transparency of data utilization and risk mitigation towards data sharing

The decentralization of data and restricted/dedicated authorization

TRACEABILITY

ABOUT: TRACKING LIVESTOCK MOVEMENT

TO ASSIST WITH:

- National disease management
- Market access to the commercial value chain and export markets

FOCUS ON DATA EXCHANGE

Through RMIS Platform
using a standardized data language

- ✓ Production Unit Number
- ✓ Animal identification
- ✓ GPS location
- ✓ Date

Minimal data that moves with each animal



PHASE 1: IDENTIFY LOCATION



COMPLETED

STEP 1:

Identify your production unit on the RMIS Platform

STEP 2:

Receive a unique number linked to your location

PHASE 2: CAPTURE DATA

STEP 3:

Select one of the accredited industry record-keeping systems

STEP 4:

Use your production unit number on your chosen system

PHASE 3: SHARE WITH PLATFORM

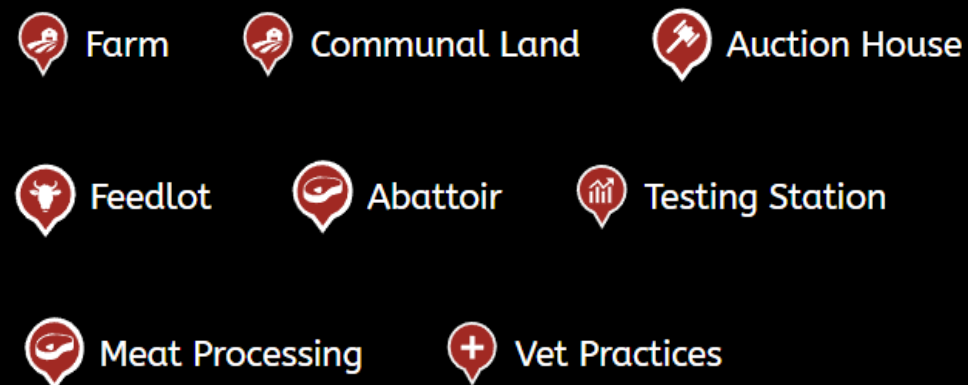
STEP 5:

Record animal movements between production units through your chosen record-keeping system

STEP 6:

Share the minimum movement data with the platform through your record-keeping system

Each key site in the Red Meat Value Chain will receive a unique Production Unit Number

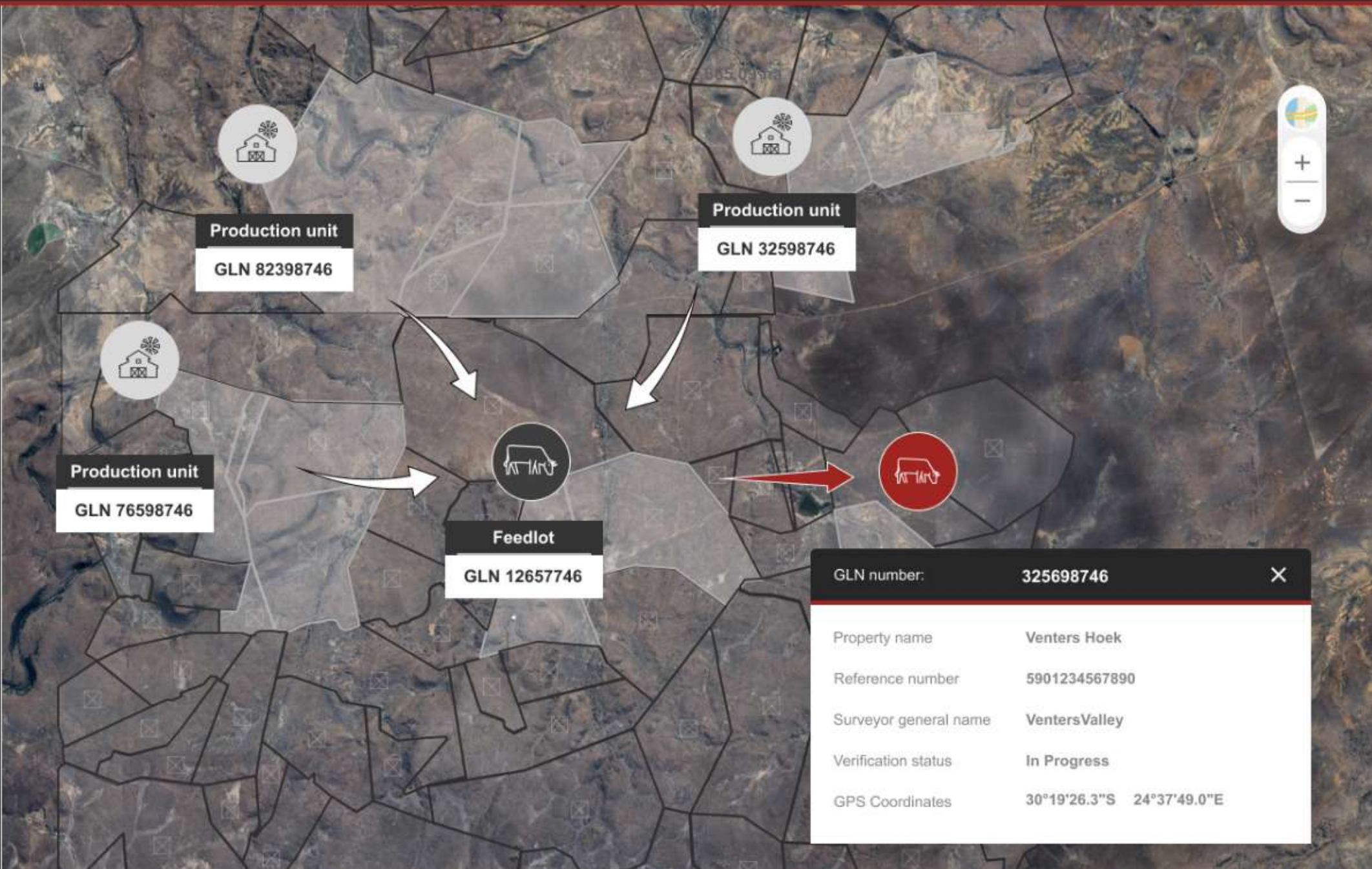


**ACCESS PLATFORM ON
THE RMIS WEBSITE**

TO REGISTER YOUR PRODUCTION UNIT

www.rmis.co.za/rmis-traceability-platform/

- Home
- GLN's
- Map**
- Users



GLN number:	325698746	✕
Property name	Venters Hoek	
Reference number	5901234567890	
Surveyor general name	VentersValley	
Verification status	In Progress	
GPS Coordinates	30°19'26.3"S 24°37'49.0"E	

TRACEABILITY PLATFORM

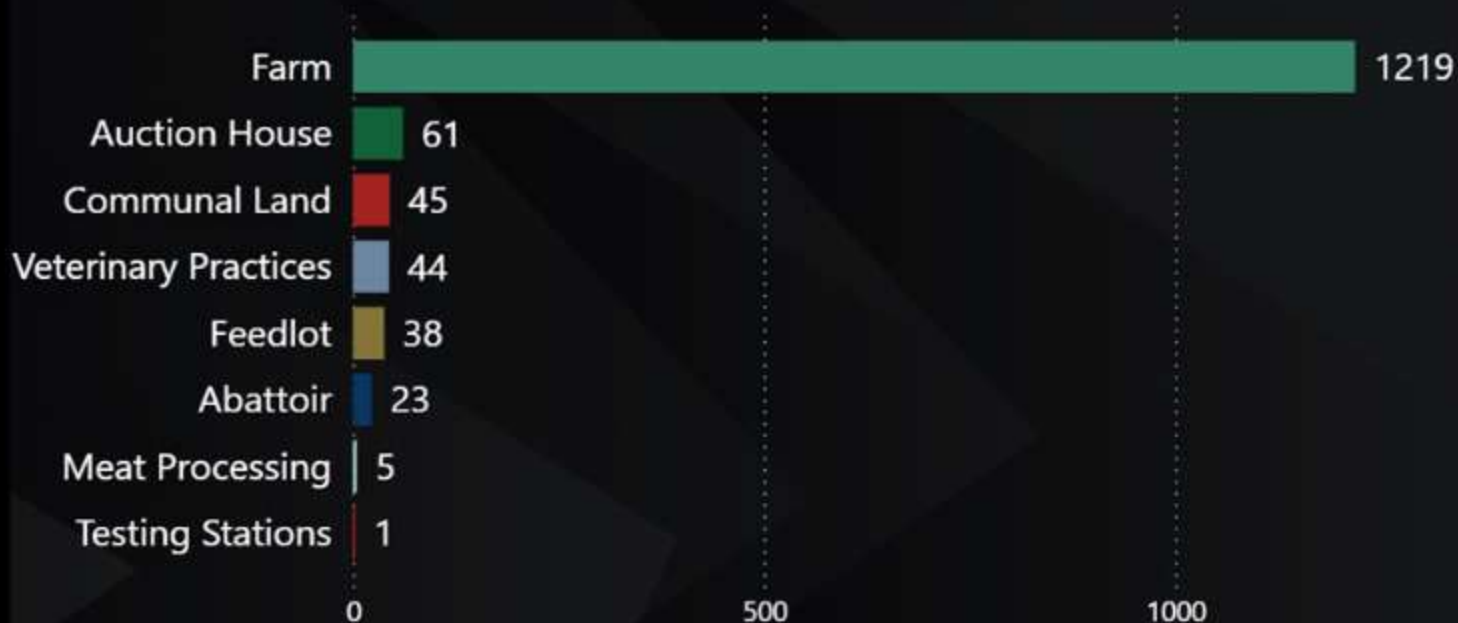
Total Registered Production
Unit Numbers

1436

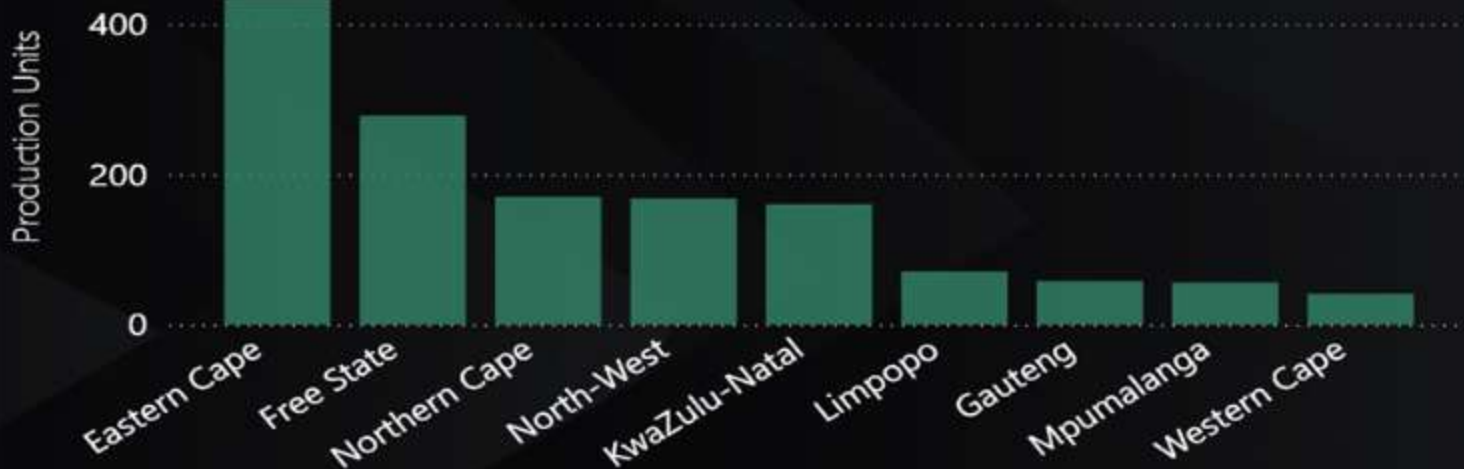
Estimated Animals Linked To Production
Unit Numbers

572 400

Registered Production Units

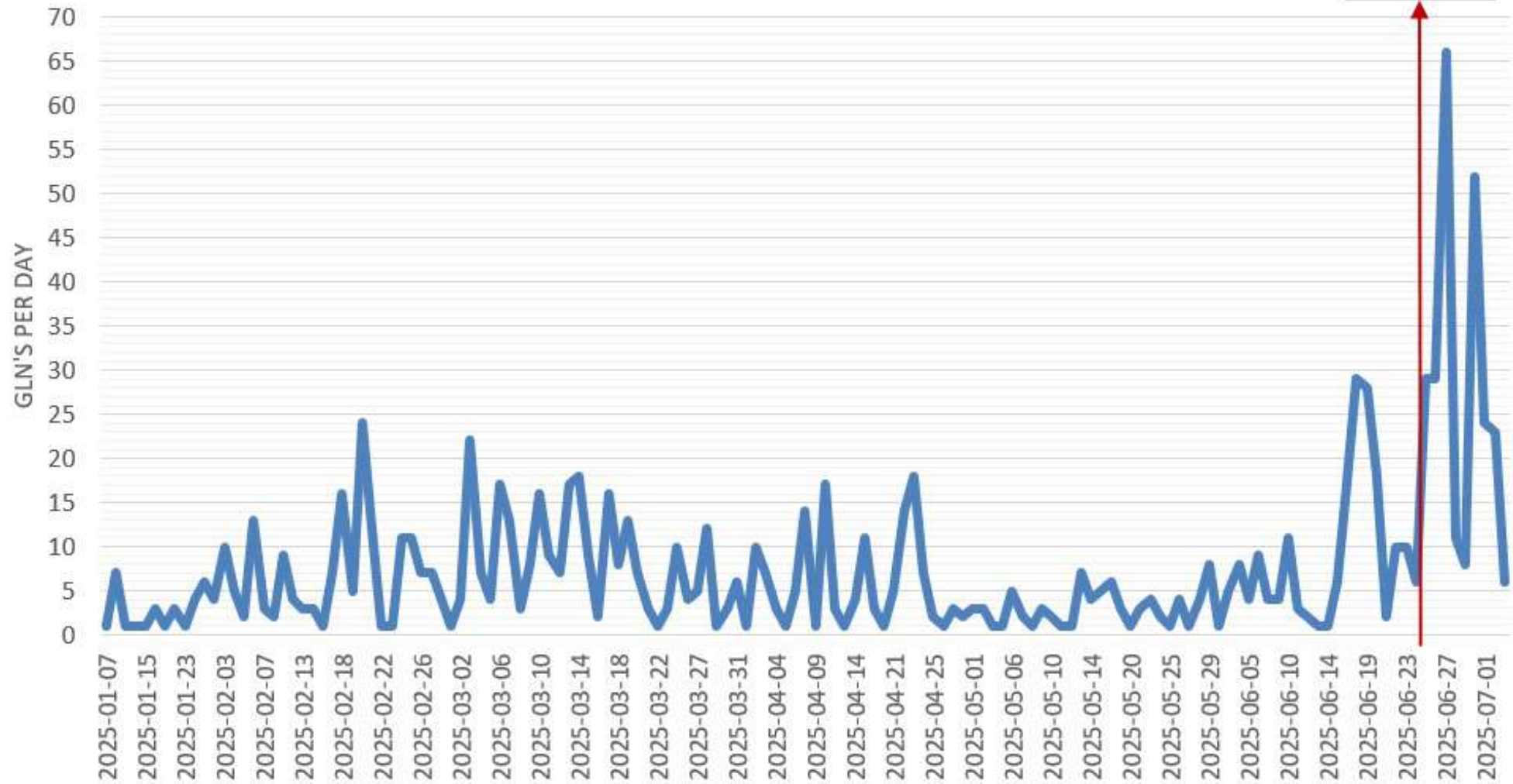


Production Units Per Province

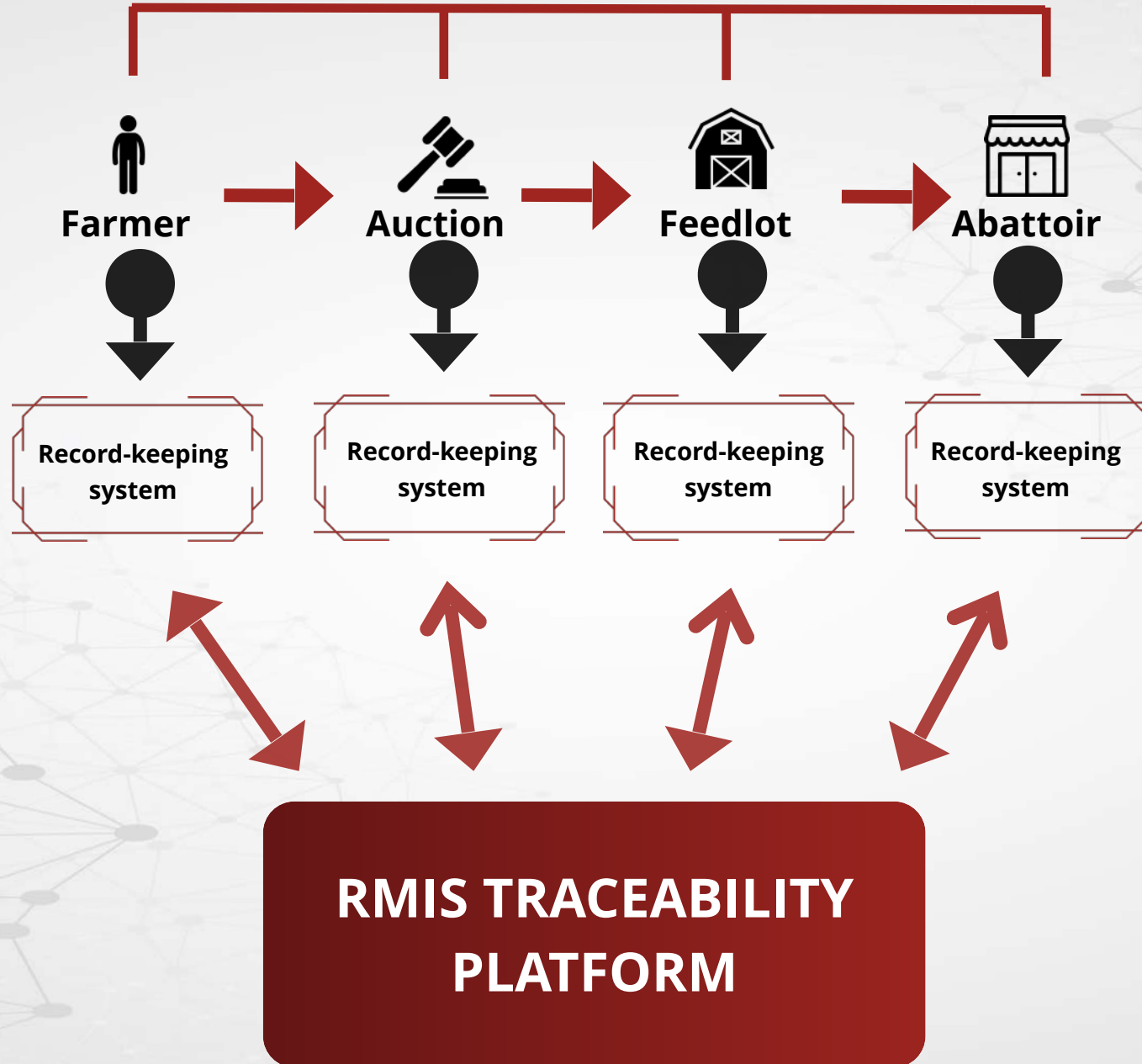


KARAN BEEF MESSAGE IMPACT

GLN Submission 2025



IDENTIFIED PRODUCTION UNIT NUMBER



DISEASE REPORTING TOOL

<https://www.figma.com/proto/00tW9b0dUVQx2t5xadMFMO/NampoStandalone?node-id=835-1337&t=l8L7J2lrWvn1DHfs-1&scaling=min-zoom&content-scaling=fixed&page-id=809%3A1027&starting-point-node-id=835%3A1337&show-proto-sidebar=1>



Home



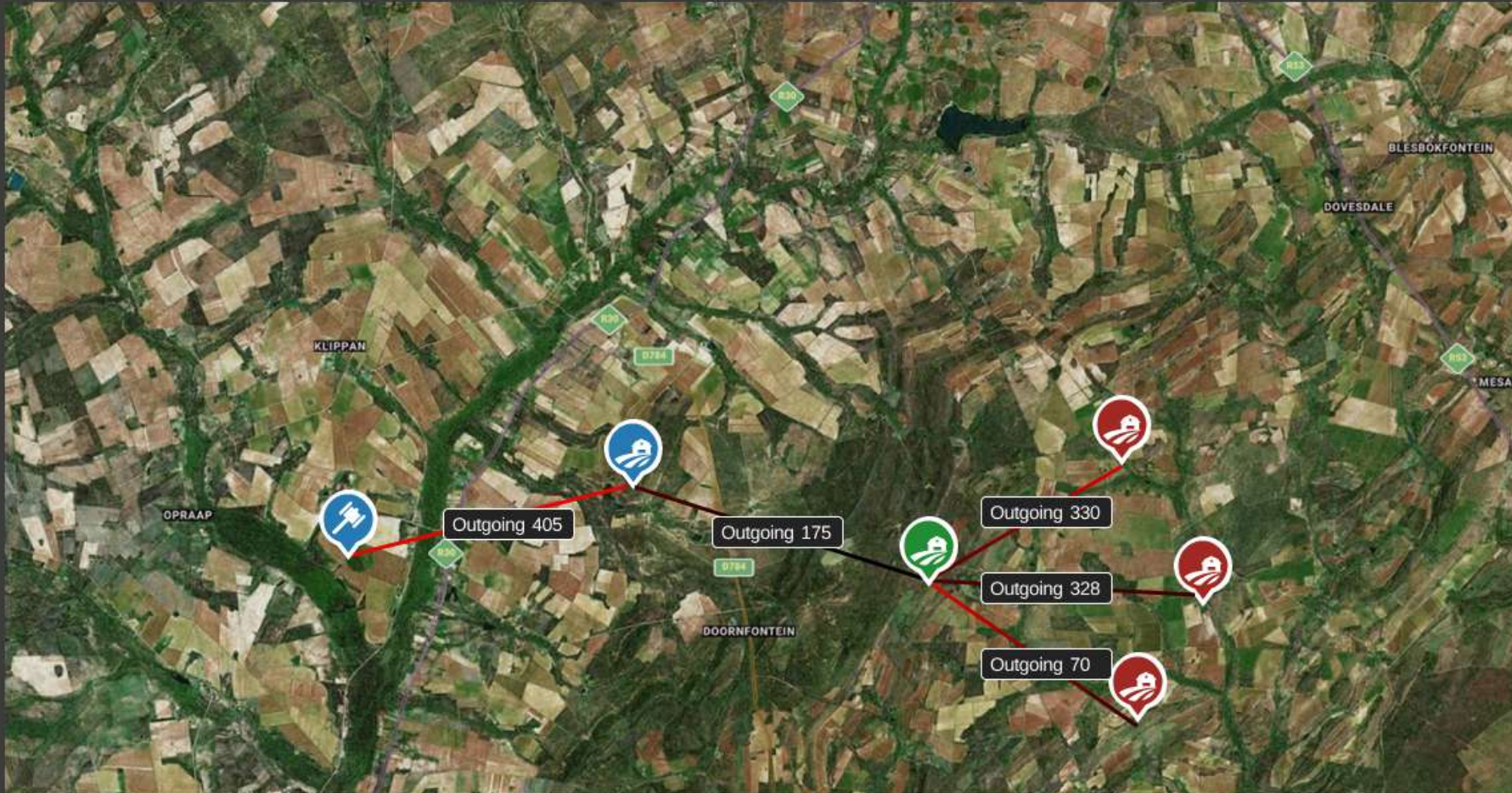
Reports

Traceability Reporting Tool

Save



Download report



Affected transfers

PUN: 600923876002

PUN: 6009238760019

PUN: 6009238763876

PUN: 6009238760313

Transfer 330

PUN: 6009238760026

Transfer 123

Transfer 85

Transfer 45

Transfer 75

PUN: 6009238760043

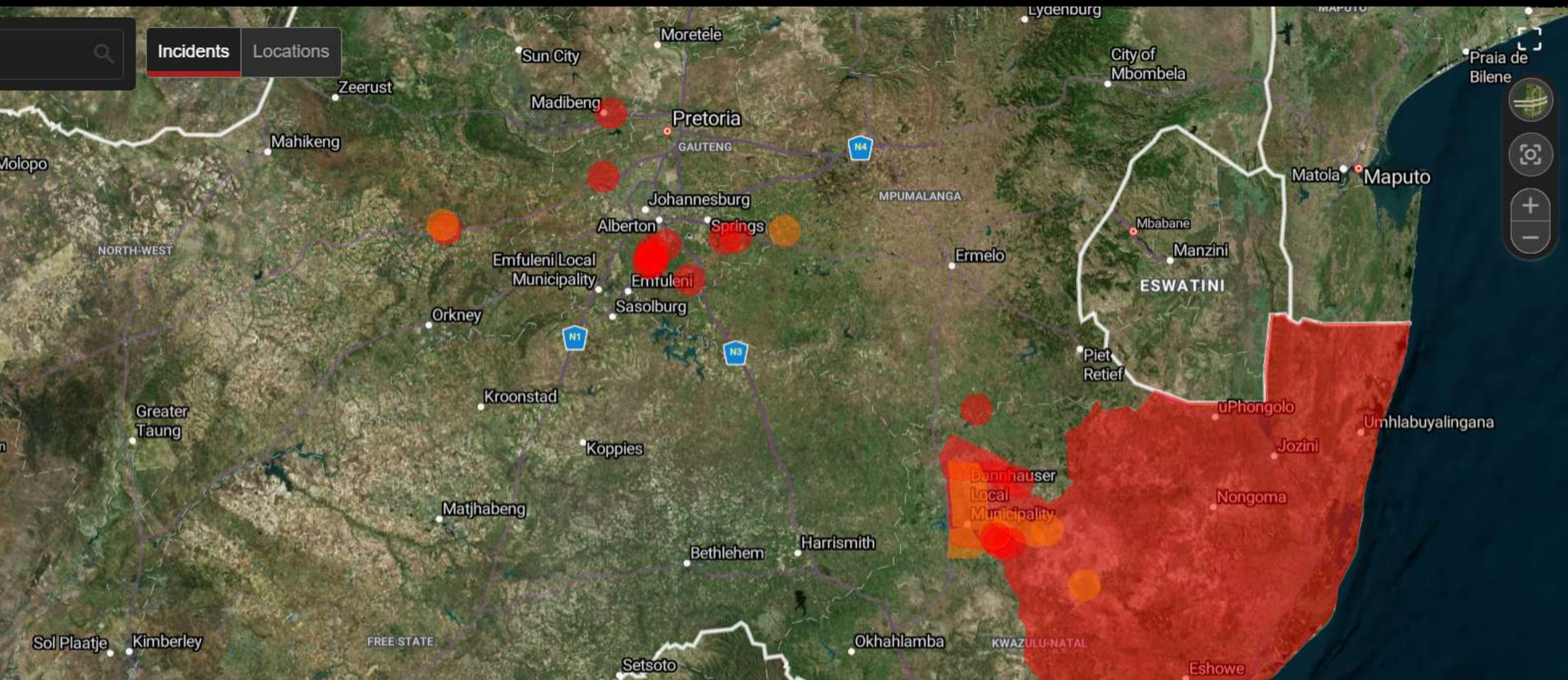
Transfer 32

Transfer 38

2025/04/12 - 2025/04/27

15 Days

CURRENT INCIDENTS ON RMIS WEBSITE



RMIS INCIDENT COMMUNICATION

- Geo-Fencing / Radius capability around disease-affected areas
- Automated Messaging: WhatsApp directly to producers within radius/ DMA

19 June: countrywide info
3 June: Suspected FMD case
7 June: Confirmed FMD case

- Streamlined communication for faster response

RMIS Map

Add Incident

Incident Details Communication Manage Locations

Alert details

Incident type: Foot-and-mouth Disease

Breed type: Cattle

Alert level: Low Medium High

Extra Info

97 characters remaining

Links

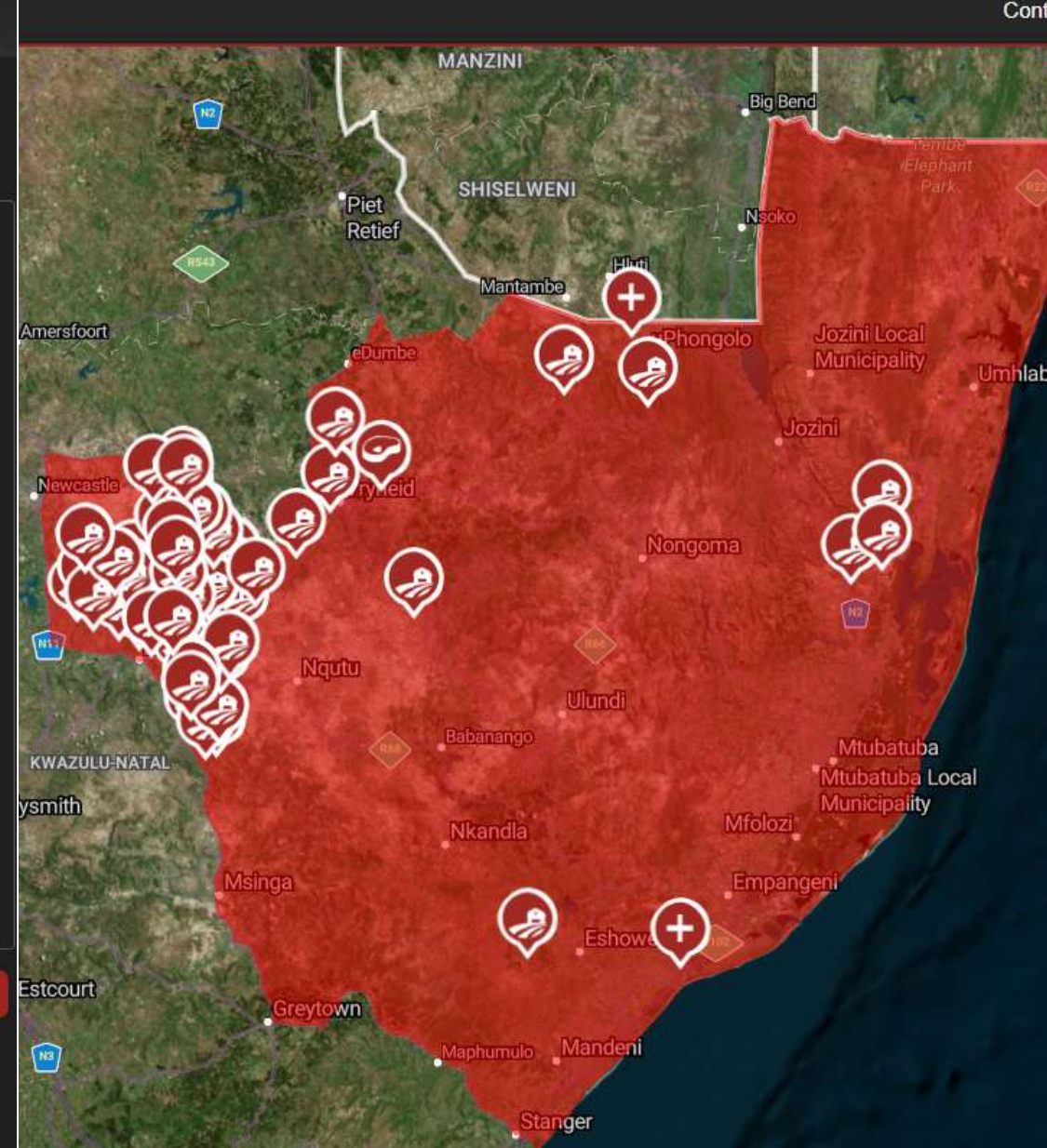
Enter link here... +

2 links remaining

Incident Opacity

Total property/farm count: 21

Cancel Resolve Update





Application details



Movement details



Consignment details



A. Application details

Production Unit

Langlaagte - 6009238439716

Name

John

Surname

Doe

Email Address

JohnDoe@gmail.com

Contact Number:

0823934468

Movement in relation to DMA

Into

Out of

Within

Through

A. Application details - Movement

Purpose of movement :

Selling of livestock

Expected date of Movement :

2025/03/29



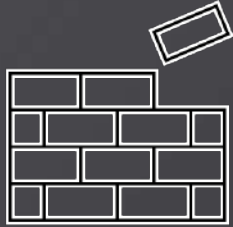
RECORD-KEEPING SYSTEM INTEGRATION

LETTER OF COMMITMENT

- Sent out to 20 systems
- Received 10 signed letters

Gigalot	Advanced
Meat Matrix Software	Advanced
AIMS	In progress
Herdmaster	In progress
LOGIX	In progress
FLEXIAUCTION	Initiation
Gallagher Animal Performance	Initiation
Allflex Connect	Initiation
Bloutand	Initiation
ID Scan	Initiation
Sparta Beef	Initiation
FarmCon	Initiation
GMP	Initiation
Bengue Farm	Initiation
eLivestock	Initiation
My Farm Works	Initiation
Beeftech	Initiation
Karan Beef	Initiation
Datamars	Initiation
Ketendo	Initiation

Security and Data Access



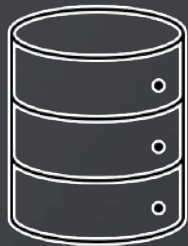
Infrastructure

Database security, Role-Based Access Control, Private networks, Encrypted communication



Platform Security

Secure by Design, Authentication and Authorization, Access to own data



Data storage

Encrypted at rest, Data masking, Data obfuscation



Transparency

Audit logs, Access approvals, Access notifications

TRACEABILITY ROADMAP



1

PHASE 1: IDENTIFY LOCATION

Identify your production unit on the RMS Platform and receive a unique number linked to your location.



2

PHASE 2: SYSTEM INTEGRATION

Integration of record-keeping systems onto the platform through a secure HTTP API



RECORD-KEEPING SYSTEM UPTAKE = AUGUST !
EMERGING FARMER SYSTEM OPTIONS

3

**DATA EXCHANGE
LAUNCH 1 NOVEMBER**

A man in a plaid shirt is standing in a field, looking at a tablet. In the background, there is a herd of cows grazing in a field under a sunset sky. The sun is low on the horizon, creating a warm, golden glow. The man is positioned on the left side of the frame, and the cows are scattered across the middle ground. The overall scene is peaceful and rural.

ADDITIONAL UTILISATION

DISEASE MANAGEMENT (RISK MITIGATION)

- Risk Assessment
- Movement Permits
- Disease outbreak tracking

PRODUCTION DATA (VALUE ADD)

- Requests from farmers / value chain roleplayers to exchange production data

ISO AUDITS

- Tracking of farm audits for ISO Accreditation
- Abattoir Audit

STOCK THEFT

- Tracking of animals to production units
- Brandmark integration

GOVERNMENT SUPPORT

Presentation to Minister of Agriculture at NAMPO

Minister speaking publicly about the Traceability Platform

- Landbouweekblad interview
<https://www.instagram.com/reel/DJtOpCtwTj/?igsh=MXM2em4zMtgweXZuOA%3D%3D>
- TMR Conference
- Biosecurity Summit
<https://www.africanfarming.com/2025/06/19/traceability-condition-livestock-sales-minister/>

Steenhuisen expressed his support for Red Meat Industry Services (RMIS), describing the system as a user-friendly step forward in monitoring livestock movements and managing disease outbreaks more efficiently.

"I understand farmers' concerns, but the RMIS system is designed to integrate existing systems, not to abuse farmers' data," he said. He added that rather than directly operating the system, the government will primarily supervise.

"Traceability is no longer optional, but a necessity in an increasingly competitive and regulated international market. Farmers who do not adapt will be limited to smaller, shrinking local trading platforms, which will adversely affect their businesses' viability."

