



SAFA CONFERENCE 2025

DEWALD OLIVIER

www.rmis.co.za



Collaboration is the Cornerstone

Government and industry
must co-own biosecurity.

No strategy succeeds in silos.



For Sustainability – disease control is non-negotiable

FMD Updates Page on RMIS Website

Disease Control Implementation Plan

Appointed dedicated Veterinarian

Establish Operational Centre

Biosecurity Marshals

We can't build a sustainable industry on hope - we need systems.

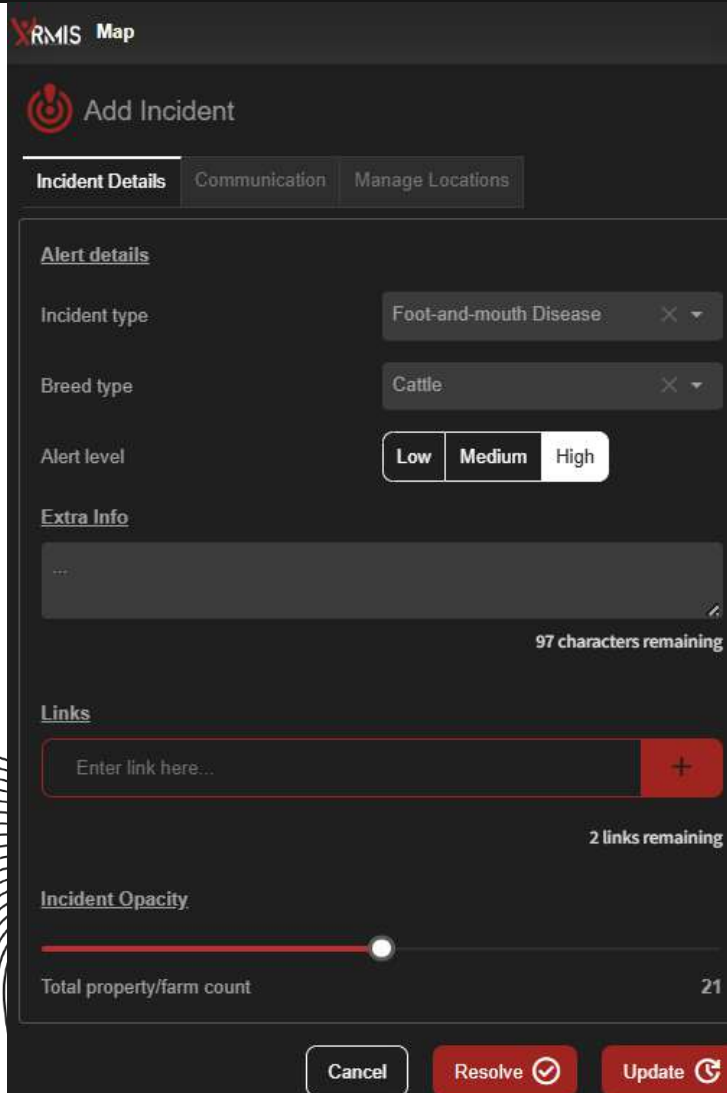


RMIS OPERATIONAL CENTRE

To streamline & support possible FMD cases

- Live mapping of suspected cases on RMIS platform
- Automated WhatsApp messaging to those within a radius of an outbreak
- Working closely with state veterinarians in high-risk areas
- Continuous communication with diagnostic laboratories to track and understand result timelines
- Dispelled false rumors regarding alleged FMD testing

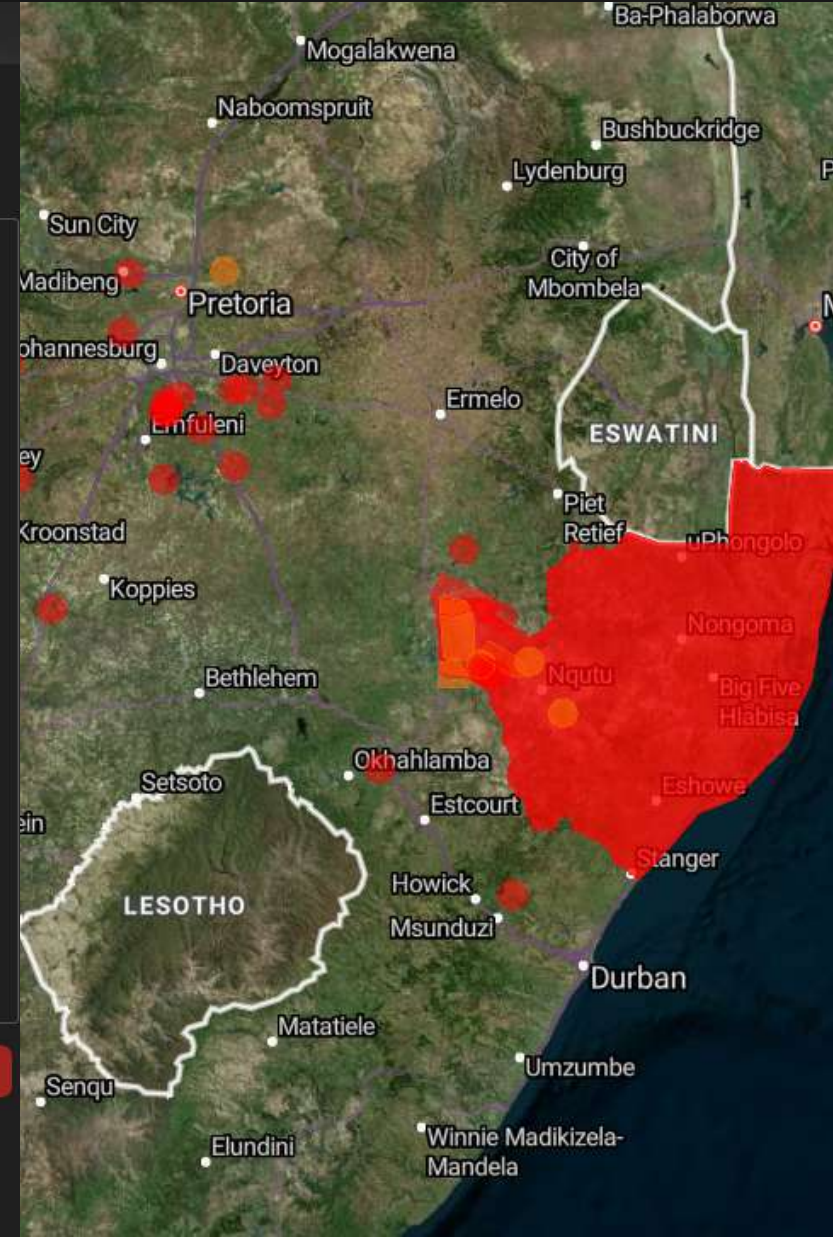
YTD supported 30 Cases



The screenshot shows the 'RMIS Map' interface. At the top, there is a 'Map' title and an 'Add Incident' button. Below this are three tabs: 'Incident Details', 'Communication', and 'Manage Locations'. The 'Incident Details' tab is active, showing the following fields:

- Alert details**
- Incident type: Foot-and-mouth Disease
- Breed type: Cattle
- Alert level: Low, Medium, High (High is selected)
- Extra Info: A text input field with a character count of 97 characters remaining.
- Links: A text input field with a '+' button and a character count of 2 links remaining.
- Incident Opacity: A slider control.
- Total property/farm count: 21

At the bottom of the form are three buttons: 'Cancel', 'Resolve' (with a checkmark icon), and 'Update' (with a refresh icon).



RMIS BIOSECURITY MARSHALS



LEGAL POWER AND ACTION

Officially authorised under

Section 4(1) of the Animal Diseases Act (Act 35 of 1984)

to investigate disease outbreaks, visit farms and facilities, request movement and production records, and assist in legal proceedings

FOCUS ON

- Inspect auctions, abattoirs, farms, transport routes and border points – *critical bottlenecks for disease control*
- Uncontrolled animal movement between provinces
- Traceability of FMD positive cases

Traceability Reporting Tool



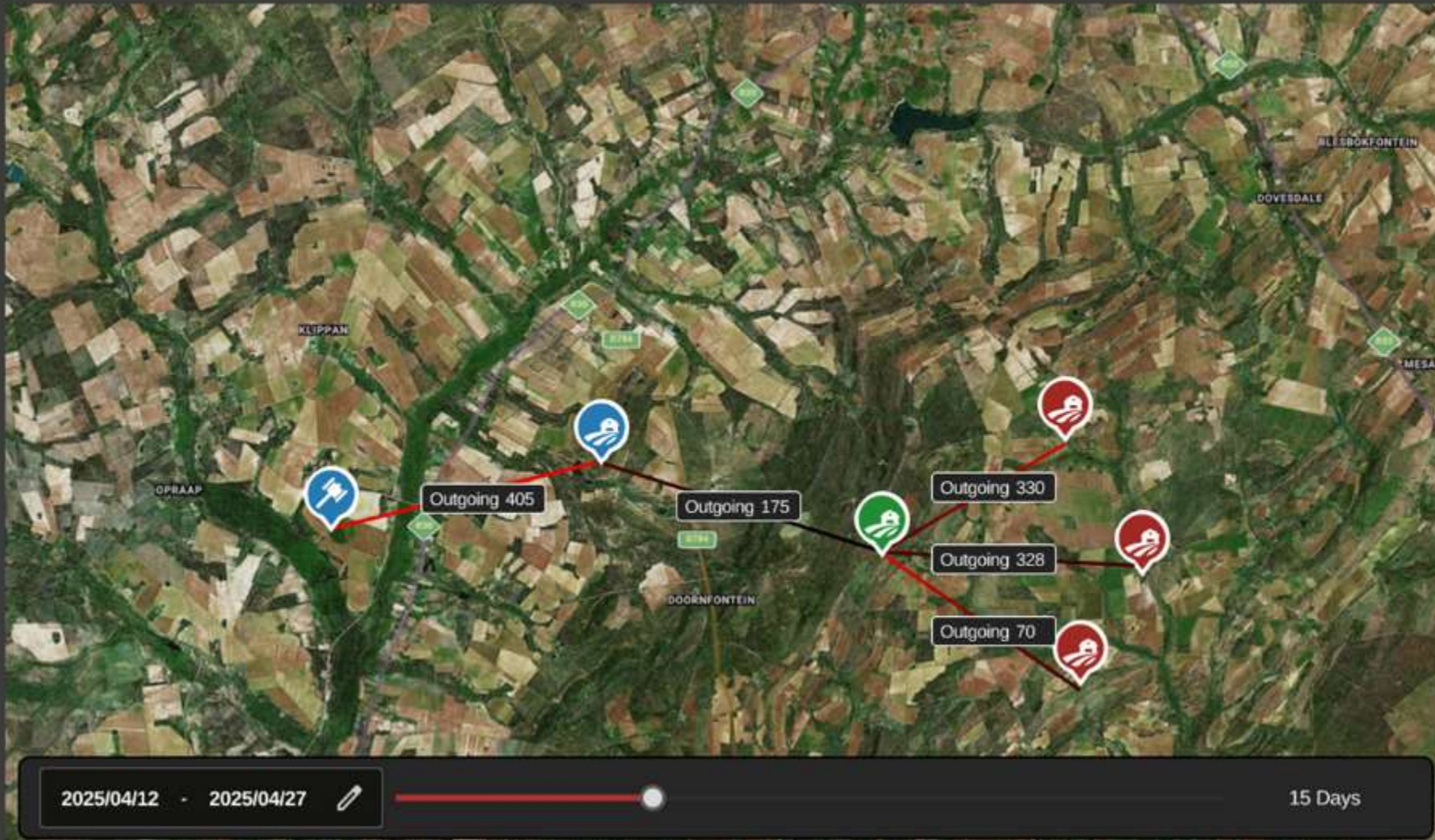
Home



Reports

Traceability Reporting Tool

Save Download report



Affected transfers

PUN:	600923876002	<input type="checkbox"/>
PUN:	6009238760019	<input type="checkbox"/>
PUN:	6009238763876	<input checked="" type="checkbox"/>
PUN:	6009238760313	<input type="checkbox"/>
Transfer	330	
PUN:	6009238760026	<input type="checkbox"/>
Transfer	123	
Transfer	85	
Transfer	45	
Transfer	75	
PUN:	6009238760043	<input type="checkbox"/>
Transfer	32	
Transfer	38	

Traceability is Not Optional

Knowing where your product has been builds trust, disease control, and trade access.

-  Farm
-  Communal Land
-  Auction House
-  Feedlot
-  Abattoir
-  Testing Station
-  Meat Processing
-  Vet Practices



TRACEABILITY PLATFORM

Total Registered Production Unit Numbers

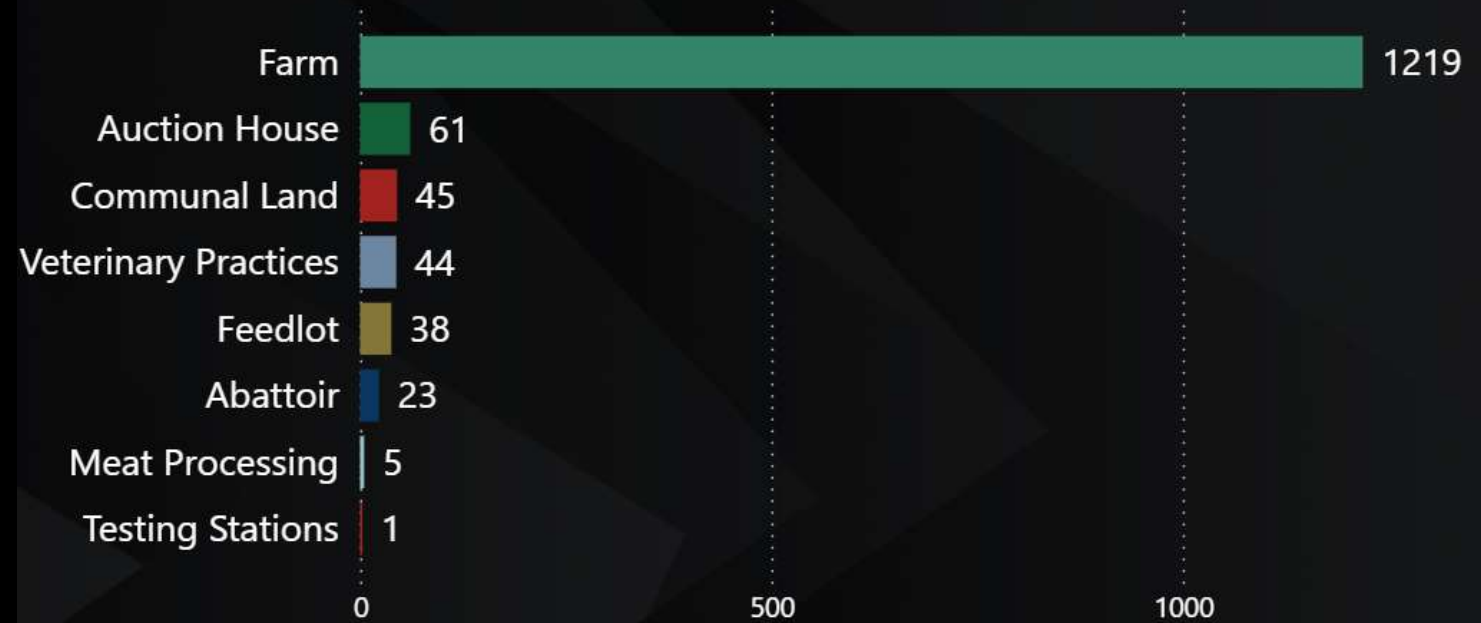
1436

Estimated Animals Linked To Production Unit Numbers

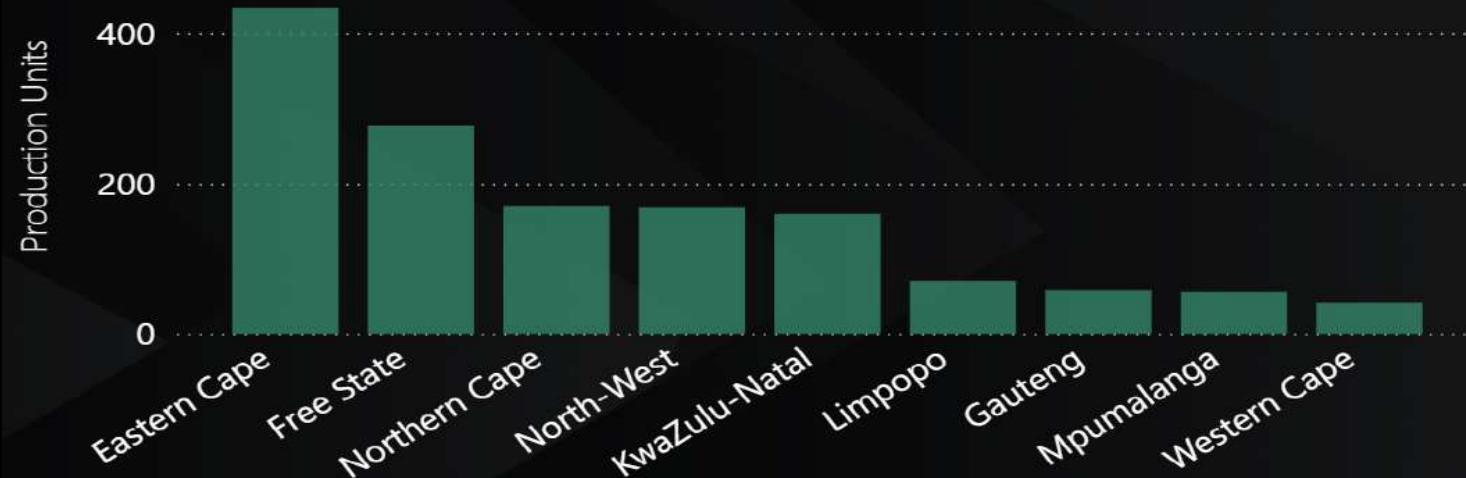
572 400

Integration initiated with 20 record-keeping systems

Registered Production Units



Production Units Per Province



Research is Our Weak Link

Innovation dies without research.

We must invest or fall behind.

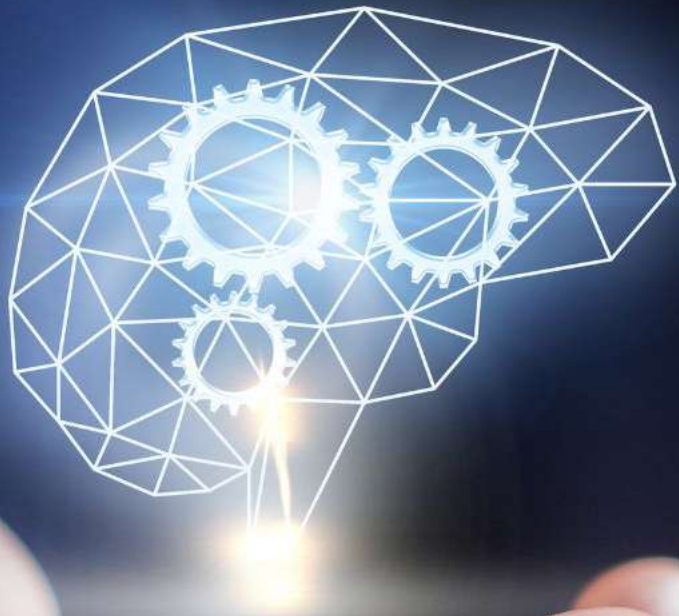


Priorities identified in the first round of Field to Future

1. Reduce Wastage of the 5th Quarter from FMD-Affected Carcasses
2. Meat Grading Roadmap (*Meat Science Perspective, consumer preference on grading & pricing mechanism*)
3. Digital disease identification support & reporting
4. Biosecurity, movement and risk awareness
5. National herd disease management plans for priority diseases (including vaccination strategies)
6. Baseline mapping: value chain nodes, production systems, ways to market, rural community structures

Build a library of red meat data





Knowledge at Your Fingertips

Dashboards available on RMIS website

-  Slaughter Numbers per Species
-  Prices per Class & Species
-  Disease per region
- Monthly reported by 151 private vets
-  Export / Import Per Product
- Quantity & Price



Thank You



dewald@rmis.co.za



www.rmis.co.za

