



DIE WINTER IS OP
HANDE

Dr A.Hentzen

Supreme Livestock Services

SAFA March 2017



SO WHAT?

Hoekom is dit belangrik?

Wat beteken dit?

Long siektes.. Vrektes...Finansieële impak



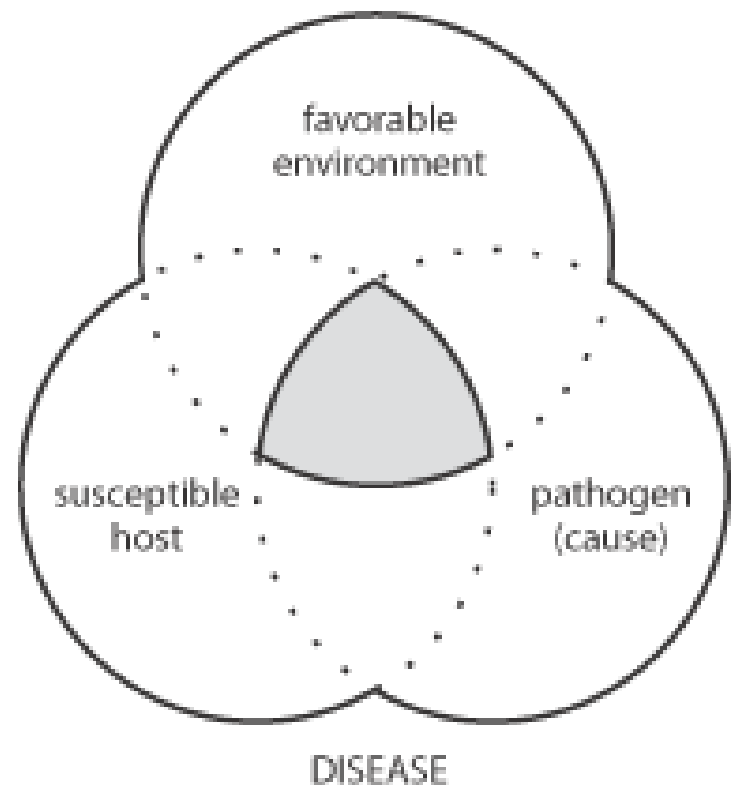
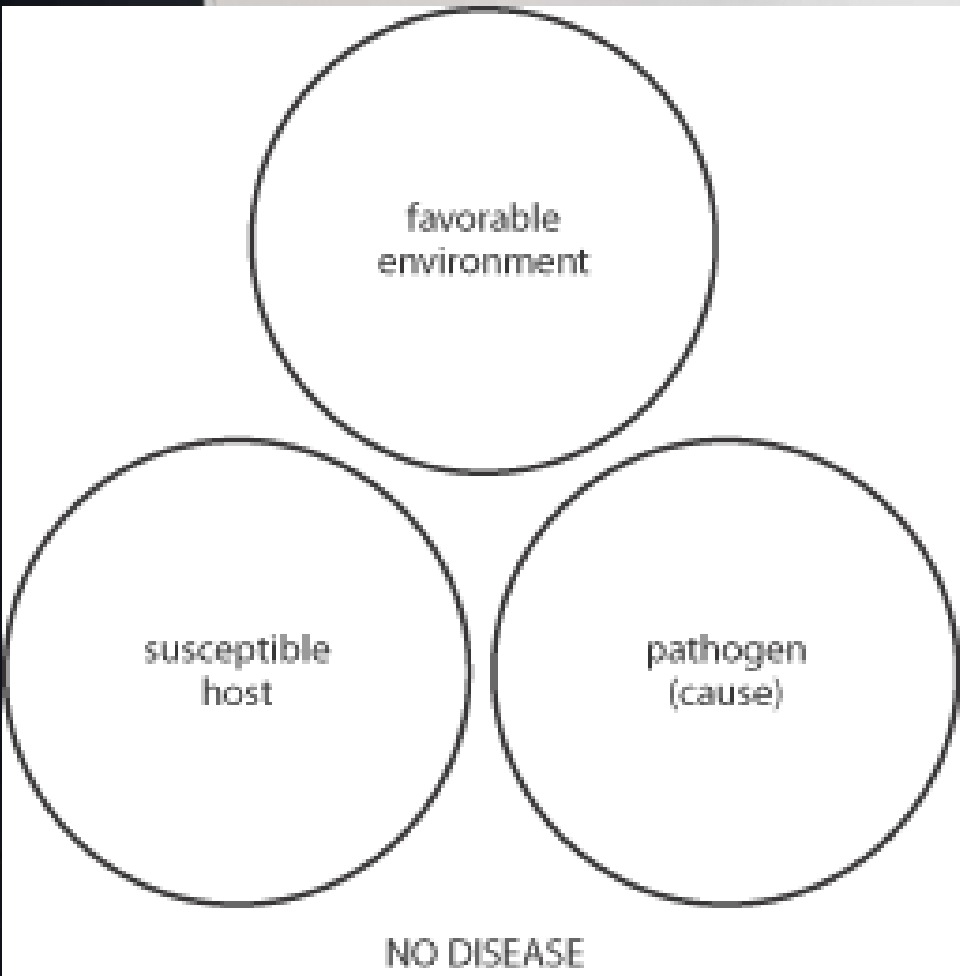
Medisyne



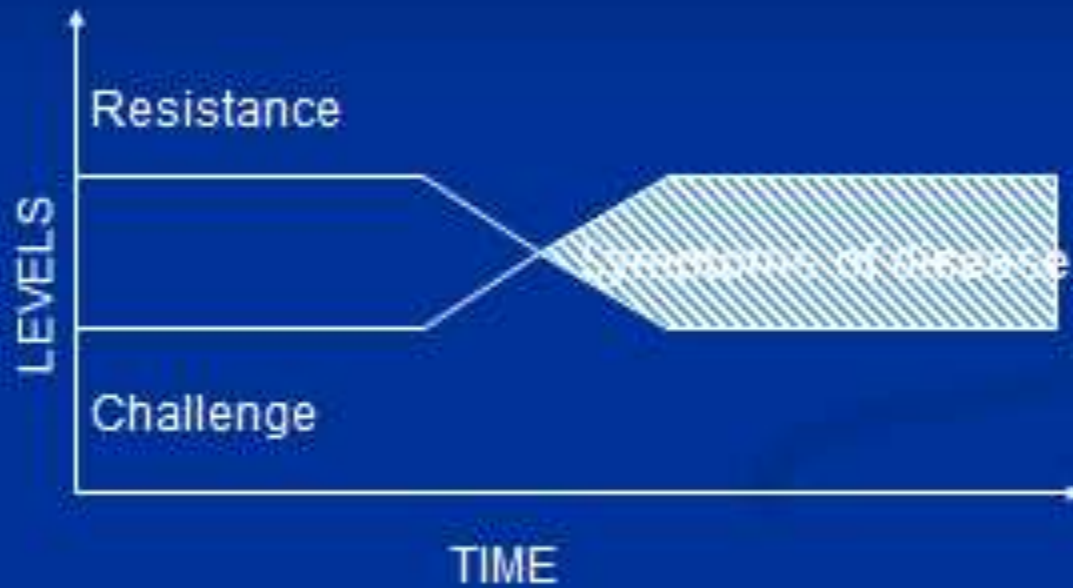
Swakker groei



Karkas effek..& afval



RESULT



@ FEEDLOT ENTRY

Stress !!!

Pathogene..BVD

Voedingstatus;Micro-Mineralen

Bestuur..Veehantering

Vreemde organismes

Verhoog uitdaging/challenge Meer organismes

Verlaag weerstand

TO DO @ FEEDLOT

Verlaag stress !!

Ent (Wat&Wanneer)

Verhoog weerstand

Micro-minerale

Bestuurspraktye; Beeshantering

Verlaag uitdaging Organismes uitdaging by kraal is
gegewe—bestuur dit-> Veld

-> Belading

Ons fokus op die pathogene en wat
ons omtrent hulle kan doen





BVD

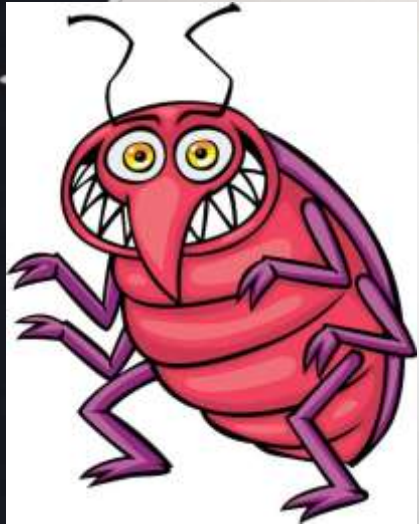
IBR

PI₃

**BOVINE
RSV**



M. Haemolítica... Pasteurella



P. multicauda... Pasteurella

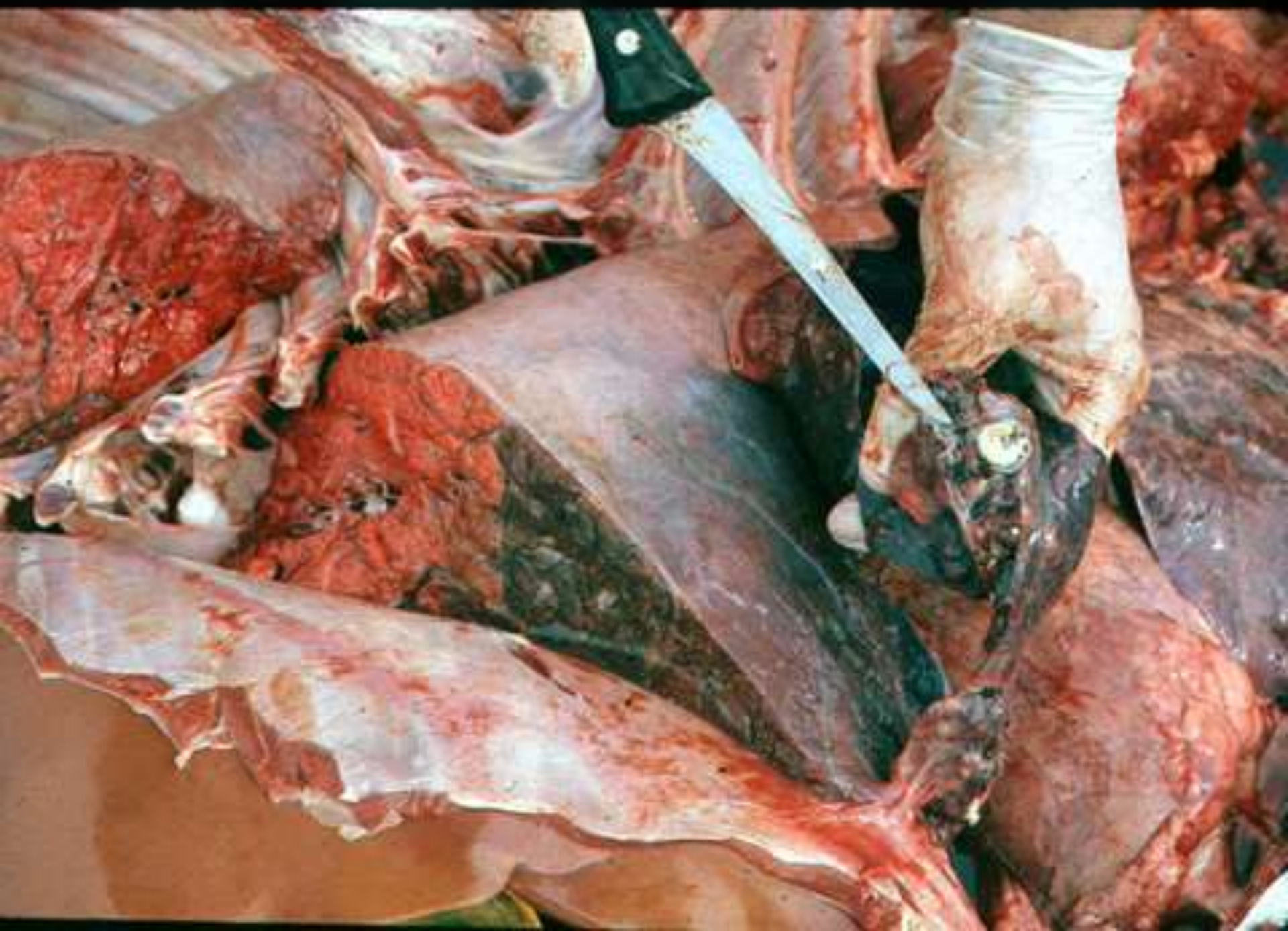


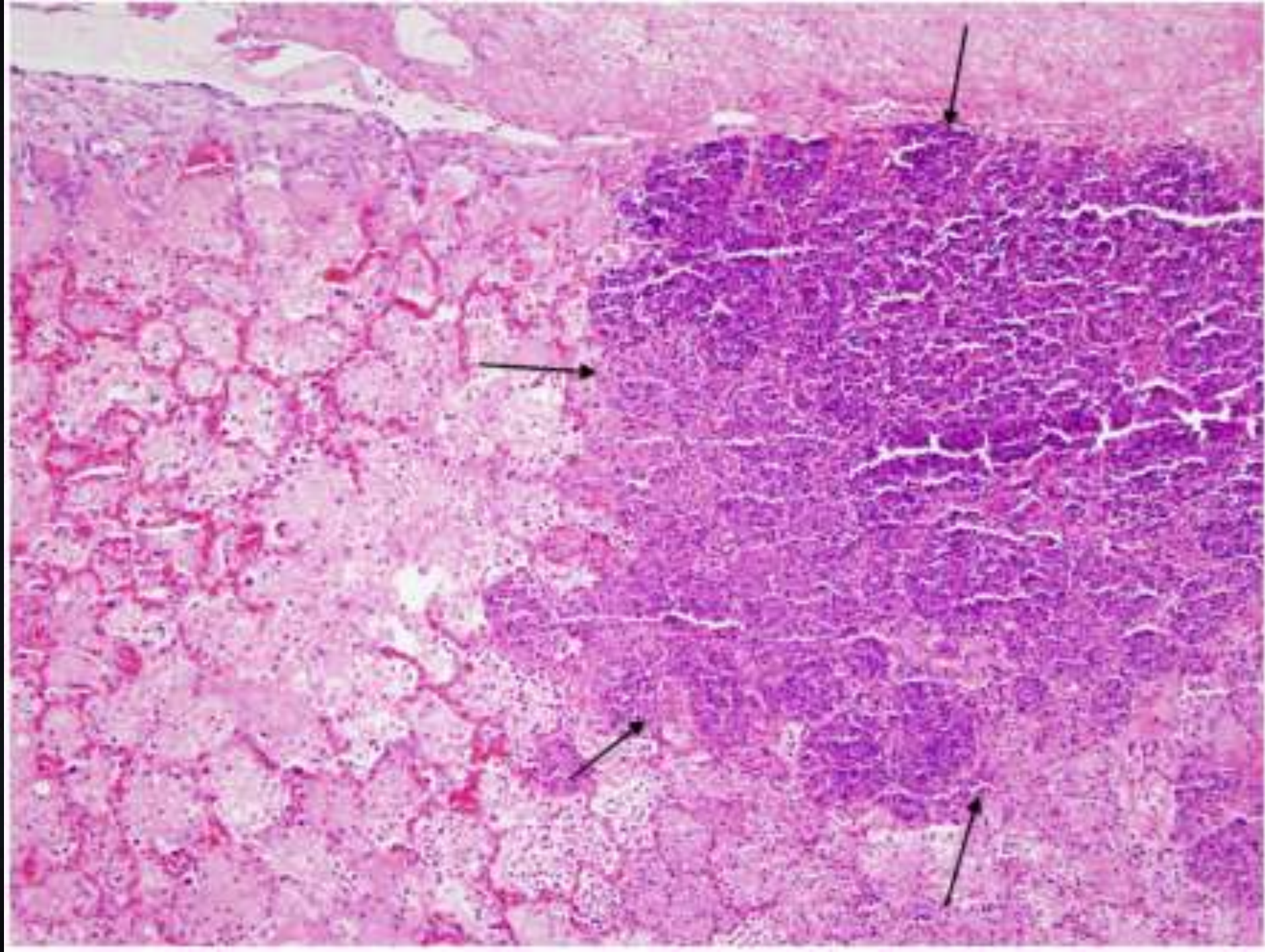
H. somnus









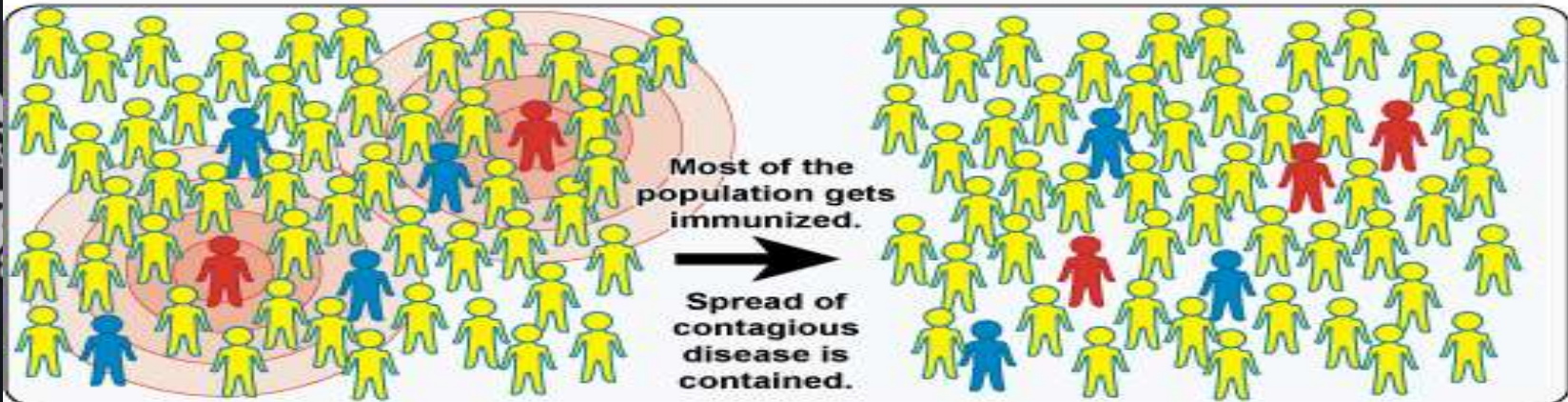
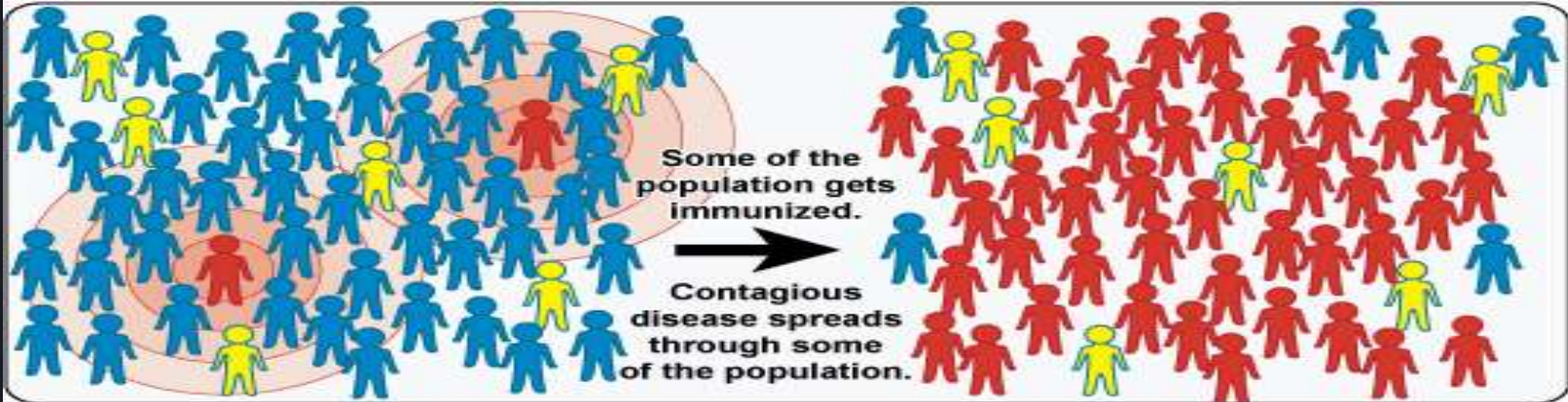
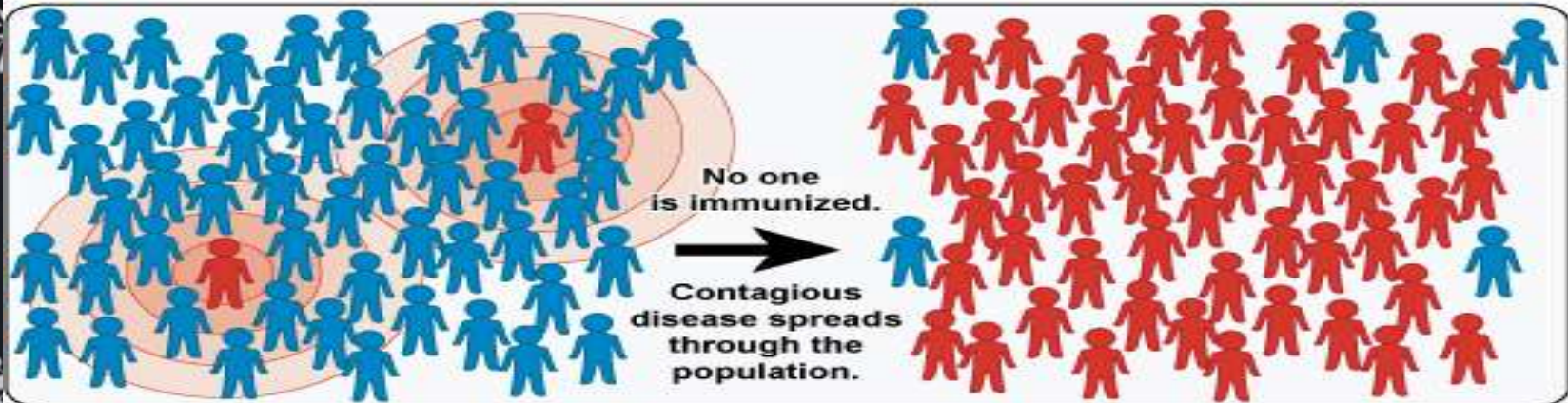


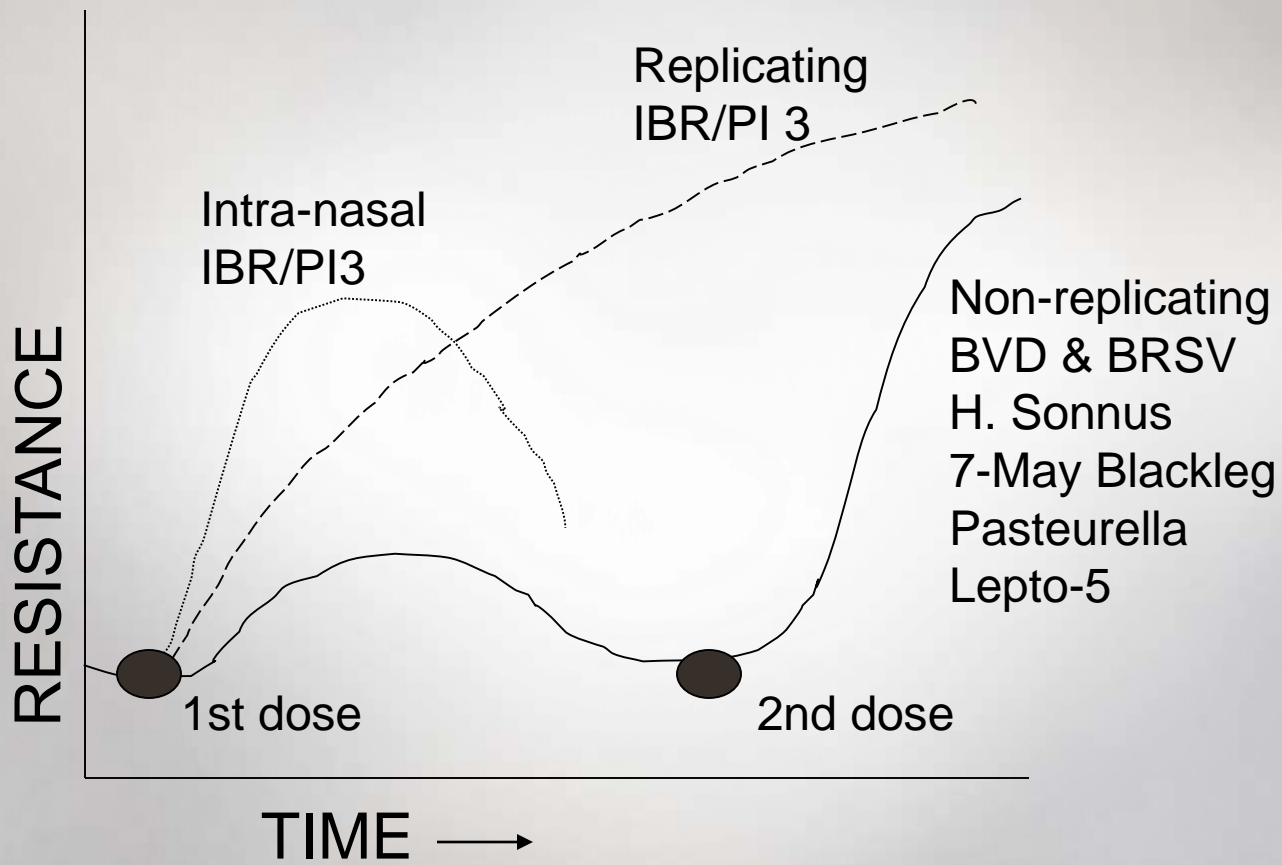


 = not immunized but still healthy

 = immunized and healthy

 = not immunized, sick, and contagious





WAT & WANNEER

MVL- Virusse

2-4w boost

Pasteurella- Bakterië

2-4w boost

Clostridium- 10way..7way

Miltsiekte & Lamsiekte

KVS; SLK ; 3DSS

Multimin

Inwendige parasiete

Uitwendige parasiete

Methaphylaxe

“The timely mass medication of a group of animals to eliminate or minimize an expected outbreak of disease.”

Penecillin; Tetracycline; Micotil; Draxxin.....

Thank You

Dankie

